

visit



THE STABLE
COLBY-SAWYER'S CAMPUS STORE

OPEN
Monday through Friday
9 a.m. – 5 p.m.
Saturday
noon – 4 p.m.
shop.colby-sawyer.edu

For more information, contact Malaika Sidmore,
manager, at malaika.sidmore@colby-sawyer.edu
or 603.526.1869.



Colby·Sawyer
College

541 Main Street · New London, N.H. 03257
800.272.1015 · colby-sawyer.edu

Colby·Sawyer College

PARENT & FAMILY RESOURCE GUIDE

2023 – 2024

Contents

Academic Calendar & Course Materials	5
Academic Programs	6
Access Resources	9
Athletics	10
Baird Health & Counseling Center	12
Clubs & Organizations	13
Dining Services	14
Financial Aid	15
Financial Services	16
Harrington Center for Experiential Learning	17
Important Phone Numbers	18
Local Businesses & Attractions	19
Lodging	22
Mail	23
Residential Education	24
Student Activities	25
Student Learning Collaborative	26
Student Success & Retention	27
Citizenship Education	28
Transportation	29



WELCOME TO COLBY-SAWYER COLLEGE!

You and your student are becoming part of a very special community — one dedicated to providing a personalized learning environment for students. Our commitment to the liberal arts, to hands-on learning and internship opportunities and to maximizing the beautiful and historic setting of New London, N.H., results in an integrated experience that prepares our students for professional and personal success. We recognize that you are an integral part of your student's support network. As such, we have developed this Resource Guide to provide you with helpful information about the academic calendar, campus life and contact information for select departments on campus.



Please do not hesitate to contact us — we are here to assist you and your student in preparing for a successful journey at Colby-Sawyer.

Sincerely,

Susan D. Stuebner, Ed.D.
President and Professor of Social Sciences
and Education
Volanaki Family Presidential Chair

FALL SEMESTER 2023

SEPT. 1	New Student Arrival Check-In and Orientation Begins
SEPT. 4	Returning Students Arrive
SEPT. 5	First Day of Classes
OCT. 9 – 10	Fall Recess
OCT. 13 – 15	Homecoming Weekend
NOV. 23 – 27	Thanksgiving Recess (no classes)
DEC. 8	Last Day of Classes
DEC. 9 – 10	Reading Days
DEC. 11 – 14	Final Exams

SPRING SEMESTER 2024

JAN. 16, 2024	First Day of Classes
FEB. 19	Winter Recess (no classes)
MARCH 11 – 15	Spring Recess (no classes)
APRIL 23	Last Day of Classes
APRIL 25, 26, 28 & 29	Final Exams
MAY 4	Commencement

Students may purchase course materials using Colby-Sawyer's virtual bookstore at bncvirtual.com/colby-sawyer.

Academic Programs

UNDERGRADUATE MAJORS

Colby-Sawyer offers a range of programs, each of which requires students to choose a major field of study and complete courses across academic disciplines. In addition to a major, students may select a concentrated area of study in select majors as well as a minor.

Accelerated BS in Nursing Nursing
Addiction Studies Psychology
Art – Studio Art Public Health
 Ceramics Self-Designed Major
 Drawing Social Work
 Painting Sociology
 Photography Sport Management
 Sculpture
Business Administration
Child Development
Child Development
Education Prep
Creative and Professional
Writing
Crime and Legal Studies
Environmental Science
Environmental Studies
Exercise Science
Graphic Design
Health Science
Healthcare Administration
History and Political
Studies
Medical Laboratory
Science

CERTIFICATE PROGRAMS

Coaching Certificate
Teacher Certification

ONLINE PROGRAMS

RN to BS in Nursing
RT to BS in Respiratory
Therapy

GRADUATE PROGRAMS

MS in Nursing
Master of Business
Administration

PRE-PROFESSIONAL

TRACKS
Pre-Law
Pre-Medical
Pre-Occupational Therapy
Pre-Physical Therapy
Pre-Physician Assistant
Pre-Veterinary

Academic Programs

UNDERGRADUATE MINORS

Minor programs are available to students pursuing baccalaureate degrees who are seeking a concentrated area of study in addition to their majors.

Minors require at least 16, but no more than 24, credits in prescribed courses, with a minimum of 8 credits at the 300-400 level. Students may take no more than four credits of independent study to satisfy minor requirements. No more than two courses, which satisfy the requirements for a minor, may be counted toward the requirements for any major or another minor.

Students must earn a minimum cumulative GPA of 2.00 in all courses towards a declared minor with the exception of programs that have specific or more restrictive requirements.

The following minors are offered:

Accounting & Finance	Political Studies
Art – Studio Art	Psychology
Biology	Child Psychology
Business Administration	Forensic Psychology
Chemistry	Counseling and Substance Abuse
Contemporary Marketing	Neuroscience Psychology
Crime and Legal Studies	Sustainability
Education	Women's and Gender Studies
Entrepreneurship	Writing
Environmental Studies	
Graphic Design	
Health Care Management	
Health Studies	
History	
Nutrition & Food Studies	
Performing Arts	

Change of major and minor forms are available at myColby-Sawyer on the myRegistrar site.

For more information on majors and minors, contact Steve Cornish, Academic Affairs Coordinator, at steven.cornish@colby-sawyer.edu or 603.526.3988.

Academic Programs



DISTANCE EDUCATION

Colby-Sawyer offers online and hybrid courses, as well as R.N. to B.S. and R.R.T. to B.S. online programs. Students are able to take 100% online full credit courses that apply to their program of study. Online courses allow students flexible access to high quality, credit-bearing courses.

Students in online courses interact with faculty and collaborate with fellow students to meet course objectives through weekly online discussions and submission of assignments. Online courses are equivalent in rigor/outcomes to traditional courses.

Online programs and courses ensure access to a high quality and progressive curriculum through Moodle, the college's learning management system. Online students are subject to the same policies and processes as traditional students, unless specifically stated otherwise.

Access Resources

Access Resources encourages independence and self-advocacy while providing students equal access to the curriculum, services and activities available at Colby-Sawyer College in accordance with the Americans with Disabilities Act and Section 504 of the Rehabilitation Act.

Access Resources collaborates with students, staff and faculty to create a welcoming environment and implement reasonable accommodations to ensure that all students benefit from available opportunities.

Access Resources serves students with learning disabilities, mental health challenges, physical or psychological disabilities, and temporary medical impairments (concussions, fractures), as well as second language learners of English.

Access Resources provides weekly meetings with a learning specialist, strategies and skills sessions for effective learning, testing accommodations, classroom accommodations and housing and parking accommodations.

Access Resources is located on the second floor of Susan Colgate Cleveland Library/Learning Center.

For more information:

603.526.3713

katie.vedova@colby-sawyer.edu

colby-sawyer.edu/access-resources





THE DAN AND KATHLEEN HOGAN SPORTS CENTER

The Hogan Sports Center is fully equipped for athletic programs, student recreation and community fitness.

The 63,000-square-foot building contains a multi-purpose fieldhouse with a suspended running/walking track, a six-lane swimming pool, locker rooms, an aerobics studio, the Elizabeth Kind Van Cise Fitness Center, athletic department offices, a conference room, the sports medicine clinic and racquet sports courts.

RAY CLIMBING WALL

The indoor climbing wall, located in Mercer Hall, is 29 feet tall and 20 feet wide. It has approximately 722 square feet of textured artificial rock climbing with routes set up for all skill levels and can accommodate up to three climbers at a time.

INTRAMURAL SPORTS

3 on 3 Basketball (M,W)
 Badminton
 Battleship
 Floor Hockey (M,W)
 Indoor Soccer (coed)
 Pickleball (coed)
 Pinewood
 Racquetball (coed)
 Snowshoeing
 Volleyball (coed)

CLUB SPORTS

Cheerleading (coed)
 Golf (coed)
 Ice Hockey (M,W)
 Outing Club (coed)
 Rugby (M)
 Softball (W)

VARSITY SPORTS

Alpine Ski Racing (M,W)
 Baseball (M)
 Basketball (M,W)
 Cross Country (M,W)
 Equestrian Team (coed)
 Field Hockey (W)
 Lacrosse (W)
 Rugby (W)
 Soccer (M,W)
 Swimming & Diving (M,W)
 Tennis (M,W)
 Track & Field (M,W)
 Volleyball (M,W)

For more information:

603.526.3000

athletics@colby-sawyer.edu

colby-sawyerathletics.com



Baird Health & Counseling Center

Staffed by healthcare professionals Monday through Friday, 9 a.m. – 3 p.m., the Baird Health & Counseling Center is committed to the physical well-being, emotional fortitude and success of all full-time, matriculated students.

SERVICES INCLUDE:

- ▶ Individual, couples and group counseling
- ▶ Collaboration with home providers
- ▶ Holistic health education
- ▶ Evaluation and treatment of illness and injury
- ▶ Individual counseling
- ▶ Immunizations
- ▶ Referrals
- ▶ Stress management
- ▶ Women's exams and contraceptive services

OTHER AREA HEALTH CARE RESOURCES:

New London Hospital
273 County Road
New London, N.H. 03257
603.526.2911

Dartmouth-Hitchcock Medical Center (DHMC)
1 Medical Center Drive
Lebanon, N.H. 03766
603.650.5000

Colonial Pharmacy*
82 Newport Road
New London, N.H. 03257
603.526.2233

Robert Scarlett Pharmacy*
276 Newport Road
New London, N.H. 03257
603.526.4716

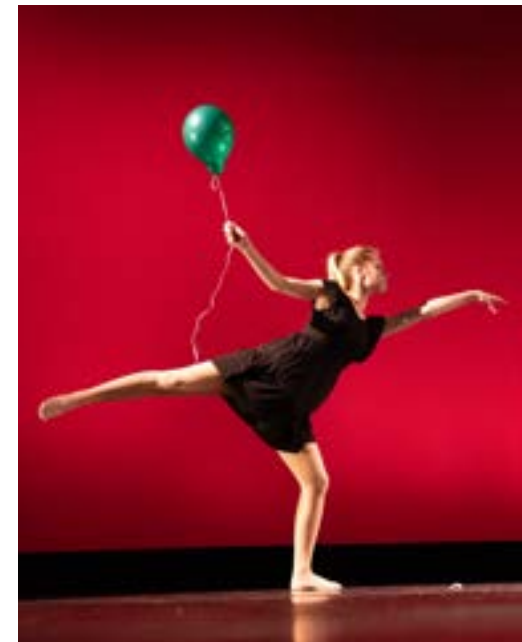
*Pharmacies deliver directly to Baird Health & Counseling Center for student pick-up during normal hours of operation, provided the student has made arrangements for payment.

For more information:
603.526.3621
colby-sawyer.edu/baird-health
bhcc@colby-sawyer.edu

Clubs & Organizations

Alpha Chi
Anime Club
Athletic Training Club
Biology Club
Black Community Club
Campus Activities Board
Child Development Club
Community Service Club
Cross Cultural Club
Cru Christian Club
CSC Players
CSC Dance Club
Exercise and Sport Science Club
Feed the Freezer
GOAT (Guild of Artistic Thinkers)
Hispanic-Latino Club
Planned Parenthood Generation Action
PRIDE
Psychology Club
Public Health Club
Rythmatic
Student Government Association
Student Nurses Association
Sustainability Core
Word Order
Yearbook

For more information:
603.526.3741
amanda.moak@colby-sawyer.edu
colby-sawyer.edu/student-activities



DINING SERVICES HOURS

Ware Dining Hall*

Monday through Thursday • 7 a.m. – 7:30 p.m.

Friday • 7 a.m. – 7 p.m.

Saturday and Sunday • 8:30 a.m. – 7 p.m.

Lethbridge Lodge Food & Espresso

Monday through Friday • 11 a.m. – 3 p.m., 5 – 11 p.m.

Ready 4U • 11 a.m. – 2 p.m.

Saturday • closed

Sunday • 5 – 11 p.m.

Galligan's Pub at Lethbridge Lodge**

Tuesday through Friday • 4 – 11 p.m. and events

**Please contact dining services manager, Amy O'Brien with any food allergy needs or dietary restrictions, concerns or questions.*

***In addition to the pub menu, beer and wine service is available to those 21+, Tuesday through Friday.*

For more information:

603.526.3989

amy.obrien@colby-sawyer.edu

colby-sawyer.edu/dining



THE FINANCIAL AID OFFICE CAN HELP ANSWER QUESTIONS ABOUT:

- ▶ FAFSA
- ▶ Financial aid offer
- ▶ Payment options
- ▶ College loan process
- ▶ Verification process
- ▶ General financial aid guidance

For additional assistance, visit colby-sawyer.edu/financial-aid or Studentaid.gov

HELPFUL FAFSA & LOAN TIPS:

- ▶ Complete FAFSA online after October 1
- ▶ Use Colby-Sawyer code 002572
- ▶ Use IRS Data Retrieval Tool, if possible
- ▶ Federal parent loan information at studentaid.gov
- ▶ Private student and parent loan information at elmselect.com

For more information:

p: 603.526.3717 or 800.272.1015

f: 603.526.3737

cscfinaid@colby-sawyer.edu

colby-sawyer.edu/financial-aid

The Financial Aid Office is located on the first floor of Colgate Hall.



TUITION INVOICES

Fall semester tuition invoices are posted online in the student portal. Email notifications are sent to students/parents when invoices are available online. Students may invite an authorized payer to view and pay. Instructions are emailed to students and are available at colby-sawyer.edu/financial-services.

IMPORTANT BILLING DATES

- ▶ Fall incoming and transfer student payments are due by July 15. The enrollment deposit does not reduce tuition payments and is refundable after Commencement.
- ▶ Fall returning student payments are due by August 15
- ▶ Spring semester payments are due by December 15

PAYMENT OPTIONS

- ▶ Online at colby-sawyer.edu/tuition-payment using credit card/debit card (MasterCard, Visa, Discover or American Express) or electronic check
- ▶ Mail checks to Colby-Sawyer College, Attn: Financial Services, 541 Main Street, New London, N.H. 03257
- ▶ Wire transfer – please contact the Financial Services Office for wiring instructions
- ▶ Payment plan through Nelnet
- ▶ An approved parent PLUS or private loan

For more information:

p: 603.526.3744

f: 603.526.3614

billing@colby-sawyer.edu

colby-sawyer.edu/financial-services

The Harrington Center for Experiential Learning is an integrated professional development collaborative that provides students with career development and advising opportunities and works to communicate the skills necessary to find internships and career prospects.

These services are designed to encourage intentional decision making; develop professional skills; promote lifelong learning; and teach global citizenship through experiential learning, self-understanding and personal reflection.

For more information:

603.526.3766

harringtoncenter@colby-sawyer.edu

colby-sawyer.edu/harrington-center

The center is located on the first floor of Colgate Hall in rooms 120/121 and is open Monday through Friday from 8 a.m. to 5 p.m.

The Financial Services Office is located on the first floor of Colgate Hall.



Important Phone Numbers

Access Resources
603.526.3713

Admissions
603.526.3700

Athletics
603.526.3610

Baird Health & Counseling Center
603.526.3621

Campus Safety
603.526.3675

Financial Aid
603.526.3717

Financial Services
603.526.3744

**Harrington Center for
Experiential Learning**
603.526.3766

Helpdesk (for technology issues)
603.526.3800

Library
603.526.3685

Registrar
603.526.3407

Residential Education
603.526.3758

Student Activities
603.526.3741

Student Development
603.526.3758

Student Learning Collaborative
603.526.3714

Student Success & Retention
603.526.3179

The Stable (campus store)
603.526.1870

Local Businesses & Attractions

New London is home to many restaurants and shops that are accessible by bike, foot or car.

RESTAURANTS

Blue Loon Bakery
12 Lovering Lane

China City
276 Newport Road

**Coach House Restaurant
at the New London Inn**
353 Main Street

Dunkin' Donuts
217 Main Street

**Flying Goose Brewpub
& Four Corners Grille**
40 Andover Road

**Galligan's Pub at
Lethbridge Lodge**
Colby-Sawyer campus
*Open exclusively to
members of the college
community and their
guests*

Henry's
Lake Sunapee
Country Club
289 Country Club Lane

Grounds Coffee Shop
374 Main Street

Jake's Market & Deli
220 Newport Road

**Little Brother Burger
Company**
420 Main Street

Millstone at 74 Main
74 Newport Road

**Oak & Grain
Inn at Pleasant Lake**
853 Pleasant Street

Peter Christian's Tavern
195 Main Street

Pizza Chef
394 Main Street

Subway
384 Main Street

Tucker's
207 Main Street



Local Businesses & Attractions



AREA RECREATION

Country Club of New Hampshire
178 Kearsarge Valley Road
North Sutton, N.H. 03260

Lake Sunapee Country Club
289 Country Club Lane
New London, N.H. 03257

**Mount Sunapee Ski Resort
and Adventure Park**
1398 Route 103
Newbury, N.H. 03255

Pat's Peak Ski Resort
686 Flanders Road
Henniker, N.H. 03242

Ragged Mountain Ski Resort
620 Ragged Mountain Road
Danbury, N.H. 03230

Visit lakesunapeeregionchamber.com
for more area attractions and events.

Local Businesses & Attractions

NEW LONDON SPECIALTY SHOPS

Allioops! Flowers and Gifts
394 Main Street

Artisan's Fine Jewelry and Gifts
11 Pleasant Street

Colonial Pharmacy
82 Newport Road

Concord Food Co-op
52 Newport Road

Flash Photo
New London Shopping Center
247 Newport Road

Go Lightly Consignment Boutique
New London Shopping Center
255 Newport Road

Hannaford Supermarket
New London Shopping Center
95 Newport Road

Hubert's Family Outfitters
219 County Road

Morgan Hill Bookstore
253 Main Street

Roberts Scarlett Pharmacy
276 Newport Road

Rocky's Ace Hardware
New London Shopping Center
257 Newport Road

Spring Ledge Farm
37 Main Street

Switchback Consignment
428 Main Street

Unleashed
New London Shopping Center
277 Newport Road

Village Sports
394 Main Street

Lodging

Dexter's Inn \$\$\$
258 Stagecoach Road
Sunapee, N.H.
603.763.5571

The Edgewood Inn \$\$\$\$
195 Main Street
New London, N.H.
603.526.2964

**Fairway Motel at Lake Sunapee
Country Club \$\$**
344 Andover Road (Route 11)
New London, N.H.
603.526.0202

Follansbee Inn on Kezar Lake \$\$
Keyser Street
North Sutton, N.H.
603.927.4221

Inn at Pleasant Lake \$\$\$\$
853 Pleasant Street
New London, N.H.
603.873.4833

Lake Inn at Mount Sunapee \$\$
1349 NH-103
Newbury, N.H.
603.763.2701

Lamplighter Motor Inn \$
34 Newport Road
New London, N.H.
603.526.6484

**Mountain Edge Resort
& Spa \$\$\$\$**
1380 NH-103,
Newbury, N.H.
603.763.4600

New London Inn \$\$\$
353 Main Street
New London, N.H.
603.526.2791
*10% off for college visitors
with the code CSC20*

Sunapee Lake Lodge \$\$
1403 NH-103
Newbury, N.H.
603.763.2010

Sunapee View Bed & Breakfast \$\$\$
348 Route 103A
Newbury, N.H.
603.763.4212

Visit lakesunapeeregionchamber.com
for more lodging options.

Mail

**When sending mail or packages to students,
the mailing address is:**

Student Name
541 Main Street
CSCXXXX (X = student's box # after CSC)
New London, N.H. 03257

Please do not write "Box or P.O. Box." This additional information may cause mail to be delivered to a box holder at the New London Post Office.

Students can receive mail and packages through the U.S. Postal Service, UPS, FedEx, FedEx Ground, FedEx Home and DHL. Drivers are not able to enter residence halls and all packages are delivered to the mailroom for pick-up. Students are responsible for bringing their own packages back to their residence hall.

For more information:
603.526.3711
mailroom@colby-sawyer.edu





At Colby-Sawyer, all students live on campus in residence halls or college houses. The Residential Education staff has three main goals:

1. To get to know students and help connect them with the right college resources to overcome their obstacles and reach their goals.
2. To work with students to develop residential communities that are based on individual responsibility and respect for others.
3. To provide opportunities for student learning outside the classroom that contribute to the college's learning outcomes.

Students are encouraged to visit the "Resources" section of the college's Residential Life web pages for more information about Colby-Sawyer's residency requirement, services and policies, opening and closing dates, and housing during college break periods.

Renter's insurance is strongly recommended for students living in residence halls, which will cover damage to students' belongings in the case of flood, fire, or other accidents. There are many providers available — two have requested their information be shared: GradGuard.com/learnmore and worthavegroup.com/product/college-student-insurance.

For more information:
603.526.3758
residential@colby-sawyer.edu
colby-sawyer.edu/residential-life

The Student Activities Office provides diverse co-curricular opportunities to help students explore their passions, find social outlets, develop leadership skills and have fun. Student Activities staff work with faculty and staff to engage students in a variety of events and activities that entertain, challenge and inspire.

Campus Activities Board

The Campus Activities Board is a student-led organization providing entertainment and educational programs to Colby-Sawyer and the community.

Emerging Leaders Program

The Emerging Leaders Program encourages student leadership and learning through workshops on personal development, team building, leadership skills and community development.

Mountain Day

An annual tradition since the 1850s, students, faculty and staff celebrate the new academic year by climbing nearby Mount Kearsarge.

Game Room

Located in the Sawyer Center and managed by the Student Government Association, the game room features billiards, air hockey, games and a social gathering space.

For more information:
603.526.3741
amanda.moak@colby-sawyer.edu
colby-sawyer.edu/student-activities



Student Learning Collaborative

Student Success and Retention

The Student Learning Collaborative (SLC) offers educational support to all Colby-Sawyer students. SLC staff empower students to find ownership and purpose in their learning experiences. Our student-centered services enhance the academic abilities and confidence of our diverse community of learners.

SERVICES INCLUDE:

- ▶ Writing Consultations: Students can meet with a tutor at any stage in the writing process, from brainstorming to editing.
- ▶ Course Content Tutoring: Courses for the Liberal Education Core Curriculum and select upper-level courses are covered by SLC tutors. Tutors are available to discuss course concepts, review for exams, or to develop study strategies targeted to a particular class.
- ▶ Group Learning Instruction: Group Learning Instructors are assigned to select gateway classes. These peer educators provide regularly-scheduled group study sessions wherein the students work with and learn from each other.
- ▶ Study Skills Consultations: Students can meet with SLC staff to discuss strategies for time management, effective reading, note taking, organization and test preparation.

For more information:
603.526.3714
cbaldwin-dimeo@colby-sawyer.edu
colby-sawyer.edu/learning-collaborative

The Office of Student Success and Retention helps students identify obstacles and connects them to appropriate resources on campus. The office works with other departments to support students' healthy development through all four years and provides early intervention for students who encounter challenges. Particular attention is paid to the first-year students' social, emotional and academic transition to college.

Student Success and Retention employs upper class students as Peer Mentors, matching mentors with First Year Experience classes and arranging one-on-one matches for first-year students, if they choose. The office also guides students who need to leave or want to return to the college.

Student Success and Retention is located in the Ware Student Center.

For more information:
603.526.3179
ewebb@colby-sawyer.edu
colby-sawyer.edu/student-success



The SLC is located on the second floor of the Susan Colgate Cleveland Library/ Learning Center and is open Monday through Thursday from 10 a.m. to 10 p.m., Friday 10 a.m. to 4 p.m., and Sunday from 6 to 10 p.m. Students can schedule an appointment at learning@colby-sawyer.edu.

Citizenship Education



Citizenship Education's role is to work with students who, for one reason or another, have been referred to our office due to alleged student conduct concerns. The student conduct process and policies are designed to be educational in nature.

Our office hosts various programming initiatives designed to help support students as they navigate through their college experience. We also encourage personal development and responsibility, while ensuring a culture of accountability on campus by overseeing the formal conduct process. Life on campus can sometimes be confusing, especially for students who are unfamiliar with the Code of Community Responsibility and other college policies. We are here to help!

While on average relatively few students are ever referred to our office, there are times that it does happen. We encourage you to reach out at any time to speak to us with any questions or concerns you might have.

For more information:

Cally White

Director of Citizenship Education

603.526.3896

citizenship@colby-sawyer.edu

Transportation



Colby-Sawyer College offers limited, complimentary student transportation assistance upon advance request via email to the Student Development Program Manager, Jen Schad (jen.schad@colby-sawyer.edu). Colby-Sawyer offers rides to off-campus appointments, shopping and Mount Sunapee. Certified student drivers are available between the hours of 8 A.M. and 10 P.M., but we cannot guarantee all students transportation assistance off-campus, as our few certified college vehicle drivers have limited availability.

Local transportation services become fully-booked around the holidays and school breaks. Please plan ahead well in advance of school breaks. If Colby-Sawyer student transportation assistance is unavailable, students must organize their own transportation through a friend or a transportation service such as Best Transportation/ Best Taxi, LLC. Student Development will cover the cost of your transportation to the New London Dartmouth Coach bus stop (which goes to South Station or Logan Airport in Boston) or to Manchester Airport (not Logan Airport) through Best Transportation (Best Taxi), LLC.

Dartmouth Coach information is available at

dartmouthcoach.com (800.637.0123) or

info@dartmouthcoach.com

Tickets must be purchased online.

Best Transportation (Best Taxi) LLC 603.448.4004 or 603.543.7139. <https://www.bestuvride.com>

